

1.5" Single Use Connector

Device transparency assures visibility of processing streams

Easy-to-assemble connector assures robust connection for pressurized transfers

Twist Lock rivets ensure a secure connection

Audible click mates the connector into a seamless alignment, ensuring integrity

Constructed of sturdy polysulfone for high pressure/vacuum applications

Rapid and reliable sterilizable connection for upstream and downstream bioprocessing



Hose sold separately

**Zip Ties and Oetiker Clamps available for high pressure applications*

Internal and external sealing barriers provide a double layer of protection to maintain asepsis under rigorous processing conditions.

A true genderless 1.5" single use aseptic connector for high volume sterile fluid transfer at low differential pressures

- Open design facilitates connections to standard 1.5" TC ports available on stainless steel or disposable aseptic processing systems
- Connects to large ID process hosing with standard hose barb end
- Connects to traditional stainless steel process equipment with TC end
- Achieves room-to-room or vessel-to-vessel transfers with flexible and reliable connection of large diameter process hose
- Many applications including:
 - Upstream to downstream transfer
 - Media preparation and transfer
 - Bioreactor harvest
 - Sterile waste removal from process stream
 - WFI or sterile water transfers
 - Perfusion or cell concentration devices
 - Connection to pump or valve fittings

CleanLine™ Connectors provide the benefits of aseptic single use capability while maintaining the reliability typically associated with traditional stainless steel technology.



1.5" Single Use Connector

Now available with Tri Clamp or Barb End for added versatility



Performance

- ~ Operating temperature 4°C to 50°C
- ~ Pressure hold up to 5.5 bar / 80 psig
- ~ Vacuum hold up to 26" Hg
- ~ Water flow rate of 290 l/m at pressure drop of 0.69 psi
- ~ Gamma stable up to 50 kGy
- ~ Autoclave stable at 124°C for 60 minutes

Quality

- ~ Each lot's materials of construction have 100% traceability
- ~ Form, fit, and function are maintained following steam and vacuum autoclave cycles
- ~ Components are cleaned, assembled, and packaged in an ISO 7 clean room
- ~ Sterility can be maintained after connection in an uncontrolled environment
- ~ Connector body material meets USP Class VI, 21 CFR 177.1655, and is Animal Derived Component Free

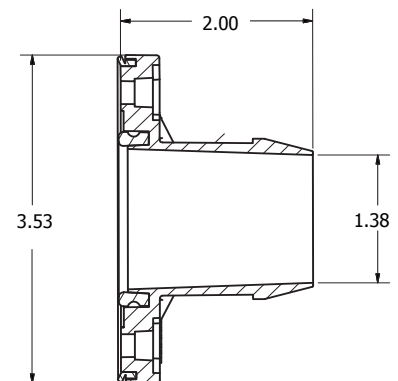
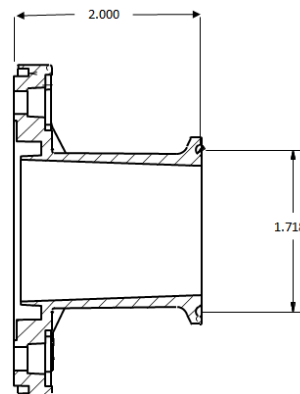
New Twist Rivet Secure Connection

Simply insert the rivet



and twist!

The rivet locks
in place.



Gamma sterilized connectors and hose, custom lengths of hose, and connector and hose assemblies available upon request. All CleanLine™ accessories are made with Medical Grade materials.