

4

3

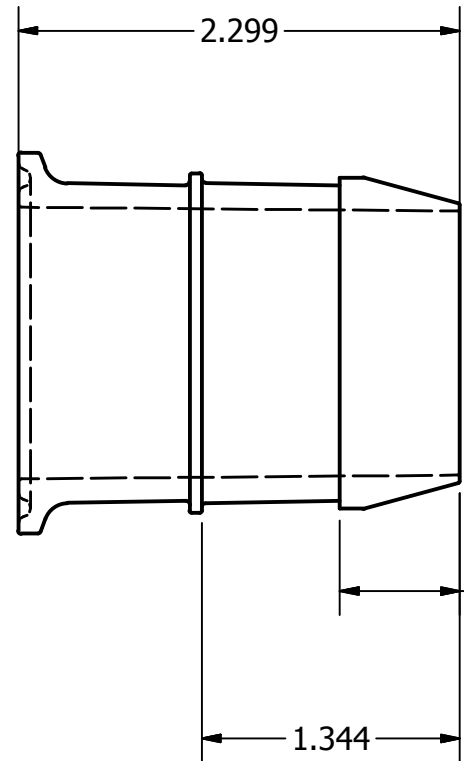
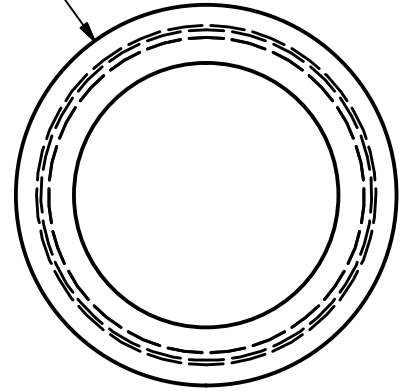
2

1

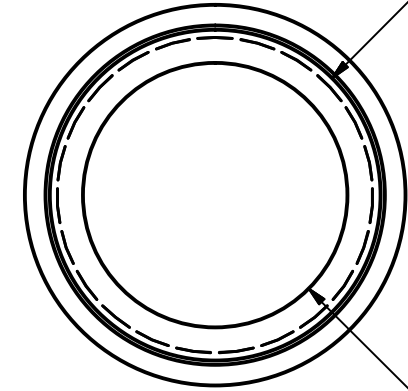
B

B

Ø1.984



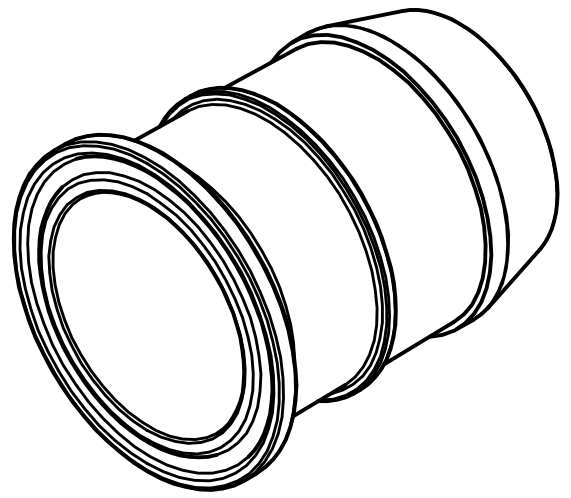
Ø1.723



Ø1.375

A

A



4

3

2

1

A

A

		PROJECT: CleanLine 1.5" Single Use Connector																					
Refine Technology, LLC 26 Chapin Road, Unit 1107 Pine Brook, NJ 07058 P: 973.952.0002 F: 973.952.0211		TITLE: Barb to Sanitary Adapter																					
THIS DRAWING AND ALL PARTS THEREOF IS AND SHALL REMAIN THE PROPERTY OF REFINE TECHNOLOGY, LLC AND MAY NOT BE REPRODUCED OR DISTRIBUTED FOR ANY PURPOSE WITHOUT THE COMPANY'S WRITTEN CONSENT.		MATERIAL: Polysulfone USP Class VI FDA 21CFR177.1655	FINISH: SPI-B3																				
STD. TOLERANCES UNLESS OTHERWISE SPECIFIED		SIZE: B	DWG: CLCOP-QP-BR.ipt																				
<table border="1"> <tr> <th colspan="2">MACHINING OPERATIONS</th> <th colspan="2">WELDMENTS AND SHEET METAL FABRICATIONS</th> </tr> <tr> <td>2 PLACE DEC.</td> <td>±0.010</td> <td></td> <td></td> </tr> <tr> <td>3 PLACE DEC.</td> <td>±0.005</td> <td>3 PLACE DEC.</td> <td>±1/16</td> </tr> <tr> <td>FRACTIONAL</td> <td>±1/64</td> <td>FRACTIONAL</td> <td>±1/16</td> </tr> <tr> <td>ANGULAR</td> <td>±1/2°</td> <td>ANGULAR</td> <td>±1°</td> </tr> </table>		MACHINING OPERATIONS		WELDMENTS AND SHEET METAL FABRICATIONS		2 PLACE DEC.	±0.010			3 PLACE DEC.	±0.005	3 PLACE DEC.	±1/16	FRACTIONAL	±1/64	FRACTIONAL	±1/16	ANGULAR	±1/2°	ANGULAR	±1°	REV: 0	SHT: 1
MACHINING OPERATIONS		WELDMENTS AND SHEET METAL FABRICATIONS																					
2 PLACE DEC.	±0.010																						
3 PLACE DEC.	±0.005	3 PLACE DEC.	±1/16																				
FRACTIONAL	±1/64	FRACTIONAL	±1/16																				
ANGULAR	±1/2°	ANGULAR	±1°																				
		FILE LOC: C:\Users\dovtorbin\Documents\CleanLine Final Parts\CLCOP-QP-BR.ipt																					
		DRAWN: Dov Torbin	APV'D ENGR: APV'D QA:																				
		DATE: 6/29/2015	DATE: DATE: SCALE: 1:1																				